

# KK liegend

StandNr: 44

JOSE, Andreas #999903939

# offene Klasse

liegend Wertung

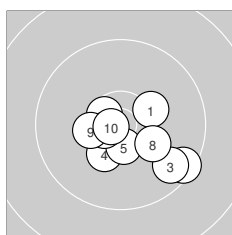
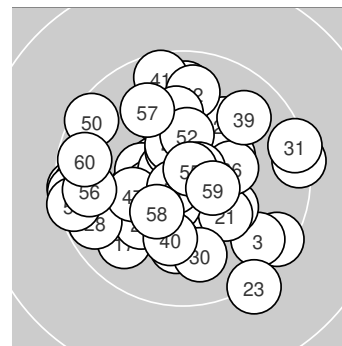
StartNr: 78

16.11.2024 10:38

ASG Brandenburg

ASG Brandenburg

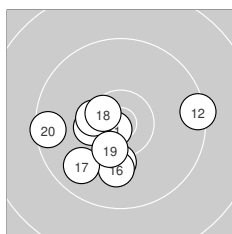
Ergebnis: **609.1** (580)  
 Serien: 102.9 101.6 99.3 101.0 101.8 102.5  
 Zähler: 40 20 0 0 0 0 0 0 0 0  
 Innenzehner: 27  
 Weitesten: 1341 (23.), 1215 (12.), 1207 (31.)  
 beste Teiler: 124.2 (55.), 130.1 (51.), 137.5 (11.)  
 Trefferlage: 1.22 mm links, 0.24 mm hoch  
 Streuwert: 5.07, horizontal: 5.35, vertikal: 4.77



### Serie 1: 102.9 (98)

10.3* ↗	9.5 ↘	9.7 ↘	10.3* ↙	10.5* ↓
10.6* ↖	10.6* ←	10.2 ↘	10.4* ←	10.8* ←

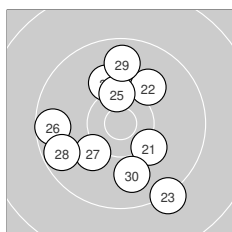
beste Teiler: 152.3 (10.), 267.5 (7.), 294.4 (6.)  
 Trefferlage: 1.40 mm rechts, 2.16 mm tief  
 Streuwert: 4.14, horizontal: 5.00, vertikal: 3.03



### Serie 2: 101.6 (97)

10.8* ↖	9.4 →	10.4* ←	10.2 ↓	10.4* ←
10.1 ↓	9.8 ↖	10.6* ↖	10.4* ↙	9.5 ←

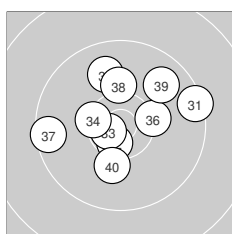
beste Teiler: 137.5 (11.), 315.9 (18.), 427.7 (15.)  
 Trefferlage: 2.05 mm links, 2.16 mm tief  
 Streuwert: 4.84, horizontal: 5.93, vertikal: 3.43



### Serie 3: 99.3 (95)

10.2 ↘	10.1 ↗	9.3 ↘	10.1 ↖	10.4* ↑
9.6 ←	10.2 ↖	9.7 ←	9.8 ↑	9.9 ↓

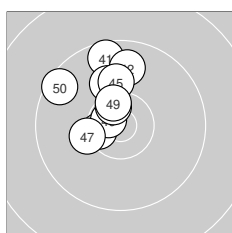
beste Teiler: 465.5 (25.), 573.6 (21.), 625.2 (27.)  
 Trefferlage: 0.87 mm links, 0.63 mm tief  
 Streuwert: 6.34, horizontal: 5.82, vertikal: 6.82



### Serie 4: 101.0 (96)

9.4 →	10.6* ↓	10.7* ←	10.4* ←	9.9 ↑
10.3* →	9.5 ←	10.2 ↑	9.8 ↗	10.2 ↓

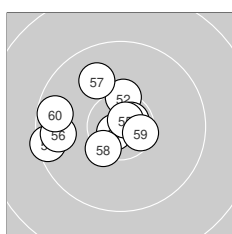
beste Teiler: 210.2 (33.), 283.3 (32.), 435.1 (34.)  
 Trefferlage: 0.06 mm rechts, 1.46 mm hoch  
 Streuwert: 5.46, horizontal: 6.28, vertikal: 4.50



### Serie 5: 101.8 (97)

9.6 ↑	9.8 ↑	10.1 ↑	10.5* ←	10.1 ↑
10.7* ↖	10.3 ←	10.6* ↖	10.5* ↖	9.6 ↖

beste Teiler: 207.0 (46.), 310.8 (48.), 348.5 (44.)  
 Trefferlage: 2.61 mm links, 4.34 mm hoch  
 Streuwert: 3.55, horizontal: 2.91, vertikal: 4.08



### Serie 6: 102.5 (97)

10.8* ↖	10.4* ↑	10.7* ↗	9.5 ←	10.8* ↗
9.7 ←	10.0 ↖	10.4* ↖	10.5* →	9.7 ←

beste Teiler: 124.2 (55.), 130.1 (51.), 187.1 (53.)  
 Trefferlage: 3.26 mm links, 0.64 mm hoch  
 Streuwert: 4.39, horizontal: 5.30, vertikal: 3.24

