

KK liegend

StandNr: 47

WISCHNEWSKY, Michael #44260108

offene Klasse

liegend Wertung

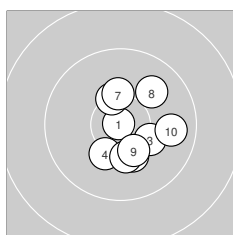
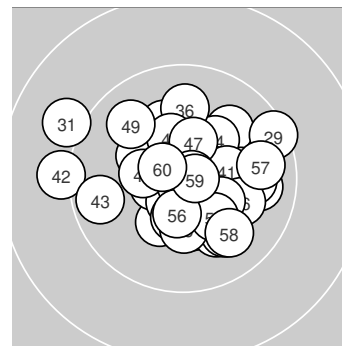
StartNr: 18

13.11.2024 16:09

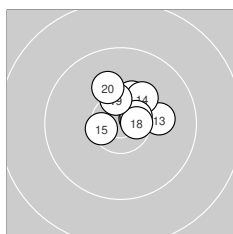
PSV Olympia Berlin e.V.

PSV Olympia I

Ergebnis: **617.4** (590)
 Serien: 102.5 104.0 102.9 102.5 101.1 104.4
 Zähler: 50 10 0 0 0 0 0 0 0 0
 Innenzehner: 34
 Weitesten: 1497 (31.), 1414 (42.), 1165 (29.)
 beste Teiler: 38.9 (1.), 86.1 (51.), 91.0 (53.)
 Trefferlage: 0.87 mm rechts, 0.08 mm hoch
 Streuwert: 4.25, horizontal: 4.70, vertikal: 3.74



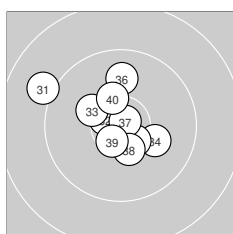
Serie 1: 102.5 (99)
 10.9* ↖ 10.2 ↓ 10.2 → 10.2 ↙ 10.4* ↑
 10.2 ↓ 10.3 ↑ 10.0 ↗ 10.3* ↘ 9.8 →
 beste Teiler: 38.9 (1.), 473.7 (5.), 504.0 (9.)
 Trefferlage: 1.95 mm rechts, 0.84 mm tief
 Streuwert: 4.11, horizontal: 3.57, vertikal: 4.58



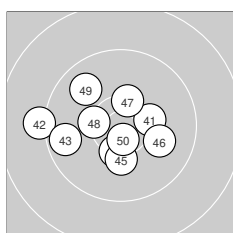
Serie 2: 104.0 (100)
 10.6* → 10.3* ↑ 10.1 → 10.2 ↗ 10.5* ←
 10.6* → 10.6* → 10.6* → 10.4* ↑ 10.1 ↑
 beste Teiler: 266.9 (16.), 276.7 (11.), 278.3 (18.)
 Trefferlage: 1.66 mm rechts, 2.27 mm hoch
 Streuwert: 2.71, horizontal: 2.98, vertikal: 2.41



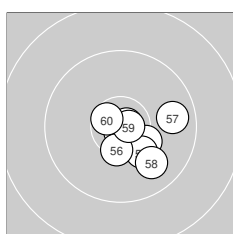
Serie 3: 102.9 (98)
 10.5* ↖ 10.7* → 10.6* → 10.7* ↖ 9.9 →
 10.6* → 10.0 ↓ 10.4* ↑ 9.5 ↗ 10.0 ↓
 beste Teiler: 218.0 (22.), 226.2 (24.), 259.8 (23.)
 Trefferlage: 2.90 mm rechts, 0.03 mm tief
 Streuwert: 4.00, horizontal: 4.23, vertikal: 3.75



Serie 4: 102.5 (98)
 9.1 ↖ 10.6* ↖ 10.2 ↖ 10.1 → 10.5* ↘
 9.9 ↑ 10.8* ↗ 10.4* ↓ 10.6* ↙ 10.3* ↑
 beste Teiler: 107.5 (37.), 291.9 (32.), 310.1 (39.)
 Trefferlage: 1.31 mm links, 1.17 mm hoch
 Streuwert: 4.78, horizontal: 5.23, vertikal: 4.28



Serie 5: 101.1 (97)
 10.3* → 9.2 ← 9.7 ← 10.4* ↓ 10.2 ↓
 10.0 → 10.4* ↑ 10.4* ← 9.9 ↖ 10.6* ↓
 beste Teiler: 246.6 (50.), 445.7 (47.), 459.9 (44.)
 Trefferlage: 2.18 mm links, 0.53 mm tief
 Streuwert: 5.31, horizontal: 6.47, vertikal: 3.81



Serie 6: 104.4 (98)
 10.8* → 10.3* ↘ 10.8* ↓ 10.8* → 10.2 ↓
 10.4* ↓ 9.8 → 9.9 ↘ 10.8* → 10.6* ↖
 beste Teiler: 86.1 (51.), 91.0 (53.), 110.6 (54.)
 Trefferlage: 2.24 mm rechts, 1.53 mm tief
 Streuwert: 3.05, horizontal: 3.38, vertikal: 2.68