

# KK liegend

StandNr: 47

ANTONOVA, Varvara #999901285

# offene Klasse

liegend Wertung

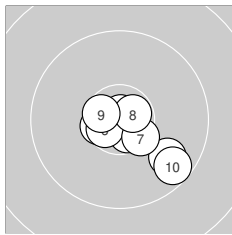
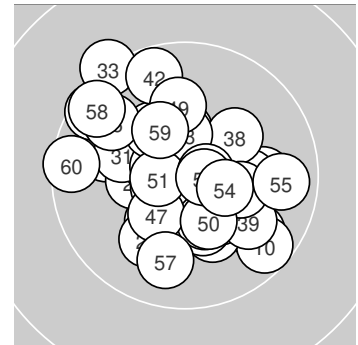
StartNr: 15

13.11.2024 11:46

PSV Olympia Berlin e.V.

PSV Olympia II

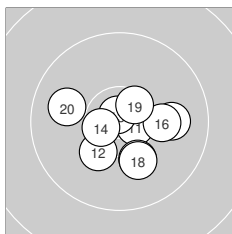
Ergebnis: **617.9** (589)  
 Serien: 104.4 103.3 104.5 102.3 102.1 101.3  
 Zähler: 49 11 0 0 0 0 0 0 0 0  
 Innenzehner: 35  
 Weitester: 1309 (33.), 1130 (60.), 1106 (45.)  
 beste Teiler: 83.4 (1.), 91.2 (4.), 99.7 (43.)  
 Trefferlage: 0.32 mm links, 0.21 mm tief  
 Streuwert: 4.25, horizontal: 4.45, vertikal: 4.04



### Serie 1: 104.4 (98)

10.8\* ↓      9.8 ↘      10.6\* ↓      10.8\* ↑      10.5\* ←  
 10.6\* ←      10.4\* ↘      10.7\* →      10.6\* ←      9.6 ↘

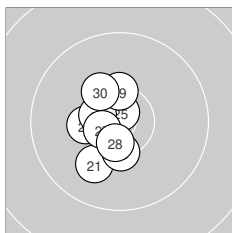
beste Teiler: 83.4 (1.), 91.2 (4.), 214.7 (8.)  
 Trefferlage: 1.35 mm rechts, 1.75 mm tief  
 Streuwert: 3.29, horizontal: 3.82, vertikal: 2.67



### Serie 2: 103.3 (99)

10.6\* →      10.3 ↙      10.8\* ↑      10.6\* ←      10.0 →  
 10.2 →      10.2 ↓      10.2 ↓      10.5\* →      9.9 ←

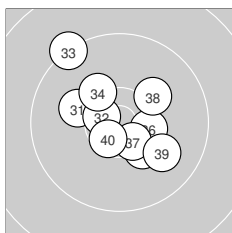
beste Teiler: 105.0 (13.), 243.2 (11.), 291.5 (14.)  
 Trefferlage: 0.98 mm rechts, 1.19 mm tief  
 Streuwert: 3.93, horizontal: 4.64, vertikal: 3.05



### Serie 3: 104.5 (100)

10.0 ↙      10.6\* ←      10.4\* ↓      10.3\* ←      10.8\* ↑  
 10.5\* ←      10.6\* ←      10.6\* ↓      10.4\* ↑      10.3\* ↘

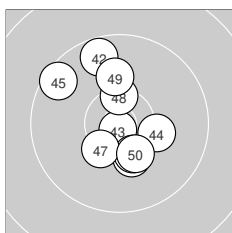
beste Teiler: 140.0 (25.), 284.6 (27.), 312.1 (22.)  
 Trefferlage: 2.09 mm links, 0.48 mm tief  
 Streuwert: 2.83, horizontal: 1.87, vertikal: 3.54



### Serie 4: 102.3 (99)

10.1 ←      10.6\* ←      9.3 ↘      10.3 ↘      10.3 ↘  
 10.4\* →      10.5\* ↘      10.2 →      10.0 ↘      10.6\* ↙

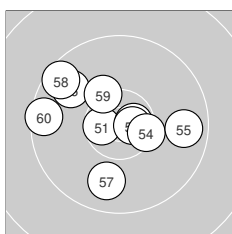
beste Teiler: 280.8 (32.), 296.8 (40.), 341.7 (37.)  
 Trefferlage: 0.05 mm links, 0.73 mm hoch  
 Streuwert: 4.81, horizontal: 4.89, vertikal: 4.72



### Serie 5: 102.1 (98)

10.3 ↓      9.7 ↑      10.8\* ↓      10.2 →      9.6 ↘  
 10.3\* ↓      10.4\* ↙      10.4\* ↑      10.1 ↑      10.3\* ↘

beste Teiler: 99.7 (43.), 409.0 (48.), 473.4 (47.)  
 Trefferlage: 0.44 mm links, 0.68 mm hoch  
 Streuwert: 4.85, horizontal: 3.97, vertikal: 5.59



### Serie 6: 101.3 (95)

10.6\* ←      10.7\* →      10.7\* →      10.4\* →      9.8 →  
 9.8 ↘      9.9 ↓      9.6 ↘      10.3\* ↘      9.5 ←

beste Teiler: 190.7 (53.), 209.6 (52.), 266.1 (51.)  
 Trefferlage: 1.68 mm links, 0.72 mm hoch  
 Streuwert: 5.37, horizontal: 6.31, vertikal: 4.22